

3455 HIGH VOLTAGE INSULATION HiTESTER

Field Measuring Instruments



5KV COMPACT PERFORMANCE

70th
Anniversary



Test Voltage 250V to 5kV

Insulation Resistance Measurement Up to 5TΩ

- Measure insulation of high-voltage equipment (such as transformers, cables, and motors)
- Automatically calculate and display PI (Polarization Index) and DAR (Dielectric Absorption Ratio)
- Step voltage testing, temperature compensation, temperature measurement, and leakage current display
- Data storage and USB interface



ISO 9001
JMI-0216



ISO 14001
JQA-E-90091



HIOKI company overview, new products, environmental considerations and other information are available on our website.

CAT IV 600V
CE



Wide Range Test Voltage Settings

Features

Generate Test Voltages Across a Wide Spectrum

The 3455 can generate test voltages ranging from 250 V to 5 kV. Settings can be made in steps as fine as 25 V. Very high insulation resistance measurement up to 5 teraohms is possible.

Ideal for All Insulation Diagnostic Applications

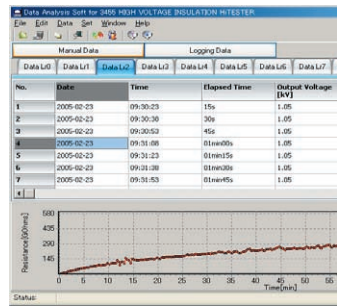
Functions such as automatic calculation and display of PI (Polarization Index) and DAR (Dielectric Absorption Ratio), as well as step voltage test, temperature compensation, temperature measurement, and leakage current display make the 3455 suitable for a variety of diagnostic applications.

Data Memory Function

The 3455 provides a manual storage function for 100 data and a logging function for 10 data (360 times). The date and time of measurement are also recorded.

USB Interface

Easily transfer data to a PC via the USB interface using our free PC application software. The software also features a convenient report creation function.



Safety Foremost

The 3455 complies with



safety regulations for category IV measurements (600 V). A shutter mechanism prevents simultaneous use of measurement terminals and other terminals. Other safety

features include a voltage measurement function, high-voltage warning indicator, and auto discharge function.

Large, Easy to Read Display

The display is backlit and features a logarithmic bar graph as an analog type indicator in addition to the digital readout.

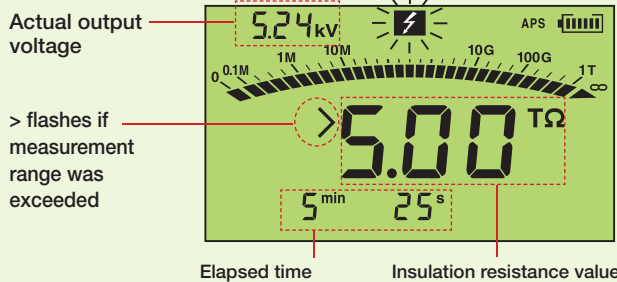


Primary Measurement Functions

Insulation resistance measurement

Measurement voltage is selectable from 250 V, 500 V, 1.00 kV, 2.50 kV, and 5.00 kV. More finely graded settings are also possible. When measurement is completed, the unit shows the insulation resistance value, test voltage (setting and actual output), leakage current, DAR, PI, and elapsed time.

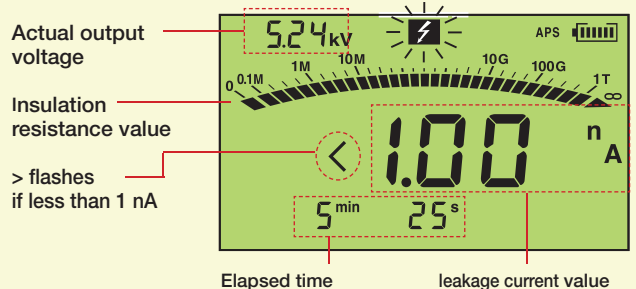
Insulation resistance measurement display



Leakage current display

When measuring insulation resistance, the instrument can be switched to display leakage current. This is possible before, during, and after measurement.

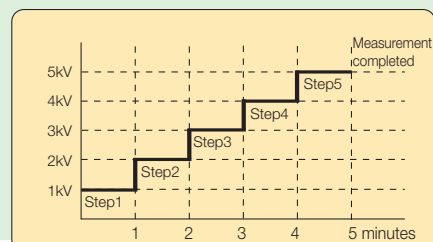
Display of leakage current during measurement



Step voltage test

In this type of test, the voltage is gradually raised and the insulation resistance and leakage current change is measured. Two different step settings are available: 500 V → 1 kV → 1.5 kV → 2 kV → 2.5 kV and 1 kV → 2 kV → 3 kV → 4 kV → 5 kV. The test time for each step can also be selected.

STEP 5.0 kV step voltage test



Make Complete Diagnostic Tests of Transformers, Cables, Motors and Other Equipment

PI and DAR display

PI: Polarization Index **DAR: Dielectric Absorption Ratio**

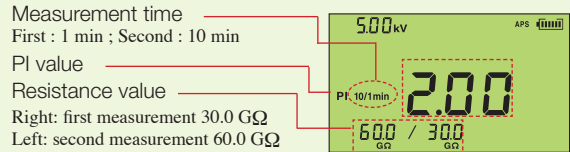
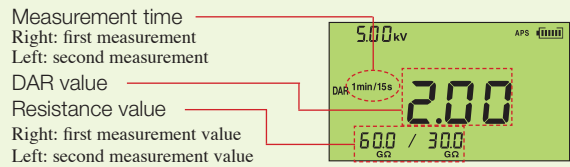
The PI and DAR values which are used as an evaluation standard for insulation are automatically calculated. With the insulation resistance measurement start point as reference, the calculation is performed as follows, using two resistance values obtained at a prescribed time interval.

Formulas :

$$PI = \frac{\text{resistance value 10 min after start}}{\text{resistance value 1 min after start}}$$

$$DAR \ 1min/15s = \frac{\text{resistance value 1 min after start}}{\text{resistance value 15 sec after start}}$$

$$DAR \ 1min/30s = \frac{\text{resistance value 1 min after start}}{\text{resistance value 30 sec after start}}$$



Specifications

Measurement Items: Insulation resistance, leakage current, voltage, temperature

Insulation Resistance

Test voltage: 250V to 5.00kV DC

Setting: Preset test voltages: 250 V, 500 V, 1 kV, 2.5 kV, 5 kV
Fine adjustment: possible in 25 V steps between 250 V and 1 kV and in 100 V steps between 1 and 5 kV
Output voltage accuracy: setting value -0%, +10%
Test voltage (setting value) / rated measurement current determines resistance value. Applied when above is measured.

Measurement current:	Test voltage	Measurement current
	250V to 1.00kV	1mA
	1.10kV to 2.50kV	0.5mA
	2.60kV to 5.00kV	0.25mA

Rated measurement current tolerance: -0%, +10%

Short-circuit

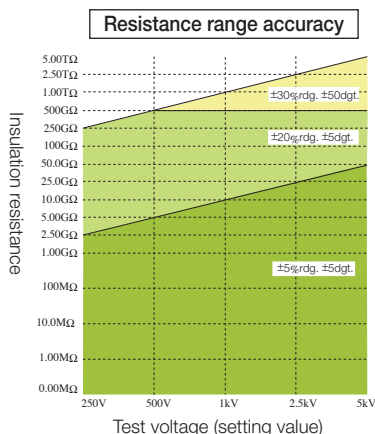
current: 2 mA or less

Output voltage Display range: 0 to 999 V, 0.98 to 5.50 kV

Monitor function: Monitor accuracy: ± 5% rdg. ± 5 dgt.

Measurement range:	Test voltage	Measurement range
	250 V	0.00MΩ to 250GΩ
	500 V	0.00MΩ to 500GΩ
	1 kV	0.00MΩ to 1.00TΩ
	2.5 kV	0.00MΩ to 2.50TΩ
	5 kV	0.00MΩ to 5.00TΩ

Resistance range: (auto range)	Resistance range	Measurement range
	10MΩ	0.00MΩ to 9.99MΩ
	100MΩ	9.0MΩ to 99.9MΩ
	1000MΩ	90MΩ to 999MΩ
	10GΩ	0.90GΩ to 9.99GΩ
	100GΩ	9.0GΩ to 99.9GΩ
	1000GΩ	90GΩ to 999GΩ
	5TΩ	0.90TΩ to 5.00TΩ



Accuracy:

Measurement range	Accuracy
Up to [Test voltage / Resistance measurable at 100 nA]	±5%rdg.±5dgt.
[Test voltage / Resistance measurable at 100 nA] to 500 GΩ	±20%rdg.±5dgt.
501GΩ to 5.00TΩ	±30%rdg.±50dgt.

(temperature and humidity range for guaranteed accuracy 0 to 28°C, max. 90%rh, no condensation)

Response time: 15s max. (from measurement start to until guaranteed accuracy display, no averaging)

Leakage Current (current measurement with test voltage being generated)

Measurement range: 1.00nA to 1.20mA

Current range and accuracy:

Current range	Measurement range	Accuracy
10nA	1.00nA to 9.99nA	±15%rdg. ±1nA
100nA	9.0nA to 99.9nA	± 15%rdg. ±5dgt.
1000nA	90nA to 999nA	±2.5%rdg. ±5dgt.
10μA	0.90μA to 9.99μA	±2.5%rdg. ±5dgt.
100μA	9.0μA to 99.9μA	±2.5%rdg. ±5dgt.
1mA	90μA to 999μA, 0.90mA to 1.20mA	±2.5%rdg. ±5dgt.

(auto range, temperature and humidity range for guaranteed accuracy 0 to 28°C, max. 90%rh, no condensation)

Response time: 15 s max. (from measurement start to until guaranteed accuracy display, no averaging)

Voltage

(temperature and humidity range for guaranteed accuracy 23±5 °C, max. 90%rh, no condensation)

Measurement range: DC ±50V to ±1.00kV, AC 50V to 750V

Frequency: DC/ 50Hz/ 60Hz

Accuracy: ±5%rdg. ±5dgt.

(for DC, absolute values of 1.01 kV and above are out of guaranteed accuracy range)

Input impedance: Approx. 10 MΩ

Response time: 3 s or less

Temperature

Measurement range and Accuracy:

Measurement range	Accuracy
-10.0°C to -0.1°C	±1.5°C
0.0°C to 40.0°C	±1.0°C
40.1°C to 70.0°C	±1.5°C

When using the 9631-05 temperature sensor, accuracy is guaranteed only for 0.0 - 40.0 °C range

Response time: Approx. 100 s, including response of temperature sensor models 9631-01 to 9631-05

(reference value, time until a 90% value of a temperature change is shown)

Specifications

Insulation Diagnosis

Temperature compensation: Result converted to insulation resistance at reference temperature. 10 different temperature compensation tables can be selected, according to insulation material of measurement object. Reference temperature: 20°C or 40°C by default, setting can be changed.

PI/DAR display: PI: Polarization Index

DAR: Dielectric Absorption Ratio

After insulation resistance measurement has started, calculation is performed using two resistance values obtained at prescribed time intervals.

Step voltage test: Measurement of insulation resistance while raising voltage at specific intervals. Two voltage step patterns can be selected.

STEP 2.5kV : 500V→1kV→1.5kV→2kV→2.5kV

STEP 5kV : 1kV→2kV→3kV→4kV→5kV

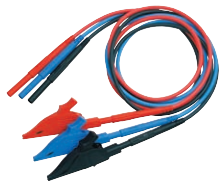
Voltage application time for each step: 30 s./1/2/5 m.

Supplementary Functions

Data memory: Manual recording: store up to 100 data , Data type: standard measurement data/ temperature compensation data/step voltage test data, Data logging: store measurement value at preset intervals, available for insulation resistance measurement only, Number of data: 10, Number of logging instances: 360 times per data, Recording interval: 15/30 s /1/2/5m, Data content: date, time, measurement interval, temperature, set voltage, actual output voltage × times, resistance × times, Additional functions: write mode, read mode, all clear, selective clear, overwrite

Communication: Interface: USB ver 2.0 (full speed)
PC application software: transfer of memory data from 3455 to computer, data display, create graph, 3455 items that can be set/changed from computer: date, time, PI time, step time for step voltage test, report function

Other items: Temperature/humidity value input, timer, elapsed time display, clock, averaging, data hold, auto discharge, active voltage warning indication, hot conductor warning indication, LCD backlight, auto power-off, buzzer



9750 TEST LEAD
9751 ALLIGATOR CLIP



9631-01 TEMPERATURE SENSOR
Molded plastic, thermistor type



9631-05 TEMPERATURE SENSOR
Molded plastic, thermistor type



9459 BATTERY PACK



9753 AC ADAPTER

General Specifications

Operating temp. , humidity: 0 to 40°C, max90%rh (no condensation)
10 to 40°C, max. 80%rh for battery pack charging

Storage temp. , humidity: -10 to 50°C, max 90%rh (no condensation)

Guaranteed accuracy period: 1 year

Operating environment: Indoors, up to 2000 m ASL

Measurement method: DC voltage application method (insulation resistance), average value rectification method (voltage)

A/D conversion: Double integral method

Display: LCD, with backlight

Indication: Numeric: up to 999, Bar graph: insulation resistance only, range 0 to 1 TΩ

Display update rate: Insulation resistance/leakage current: 1 time/second (0.25 times/second when using averaging)

Output voltage monitor: 2 times/second

Voltage measurement: 4 times/second

Temperature measurement: 1 time/second

Power supply: LR6 (AA) alkaline battery × 6

9459 battery pack: 7.2 V DC (rechargeable, Ni-MH)

9753 AC adapter: rated input voltage 100 to 240 V AC, rated output 15VA

Max. power consumption: 15 VA (using AC adapter), 6 VA (using batteries or battery pack) (5 kV generated, +/- terminals open, backlight off)

Continuous operation time: approx. 5 hours (with alkaline batteries)

(reference value) approx. 9 hours (with 9459 battery pack)

Max. input voltage: AC750Vrms, DC1000V

Max. rated voltage to ground: 600Vrms (CATIV) , 1000Vrms (CATIII)

Withstand voltage: 6880 V AC, 15 sec.

Dimensions & Mass: 260(W) × 250.6(H) × 119.5(D) mm, 2.8kg

Applicable standards: Safety: EN61010-1:2001, EN61010-031:2002

EMC: EN61326:1997+A1:1998+A2:2001

EN61000-3-2:2000

EN61000-3-3:1995+A1:2001

Accessories: 9750-01 TEST LEAD (RED) × 1, 9750-02 TEST LEAD (BLACK) × 1, 9750-03 TEST LEAD (BLUE, GUARD) × 1, 9751-01 ALLIGATOR CLIP (RED) × 1, 9751-02 ALLIGATOR CLIP (BLACK) × 1, 9751-03 ALLIGATOR CLIP (BLUE, GUARD) × 1, LR6 (size AA) battery × 6, USB CABLE × 1, PC APPLICATION SOFTWARE (download from HIOKI web site)

Options: 9631-01 TEMPERATURE SENSOR

(Thermistor, Molded type, Approx. 1 m)

9631-05 TEMPERATURE SENSOR

(Thermistor, Molded type, Approx. 6 cm)

9750-11 TEST LEAD (Red, Approx. 10 m)

9750-12 TEST LEAD (Black, Approx. 10 m)

9750-13 TEST LEAD (Blue, Approx. 10 m, GUARD)

9459 BATTERY PACK

9753 AC ADAPTER

HIOKI
HIOKI E. E. CORPORATION

DISTRIBUTED BY

**Test Equipment
Depot**
1-800-517-8431